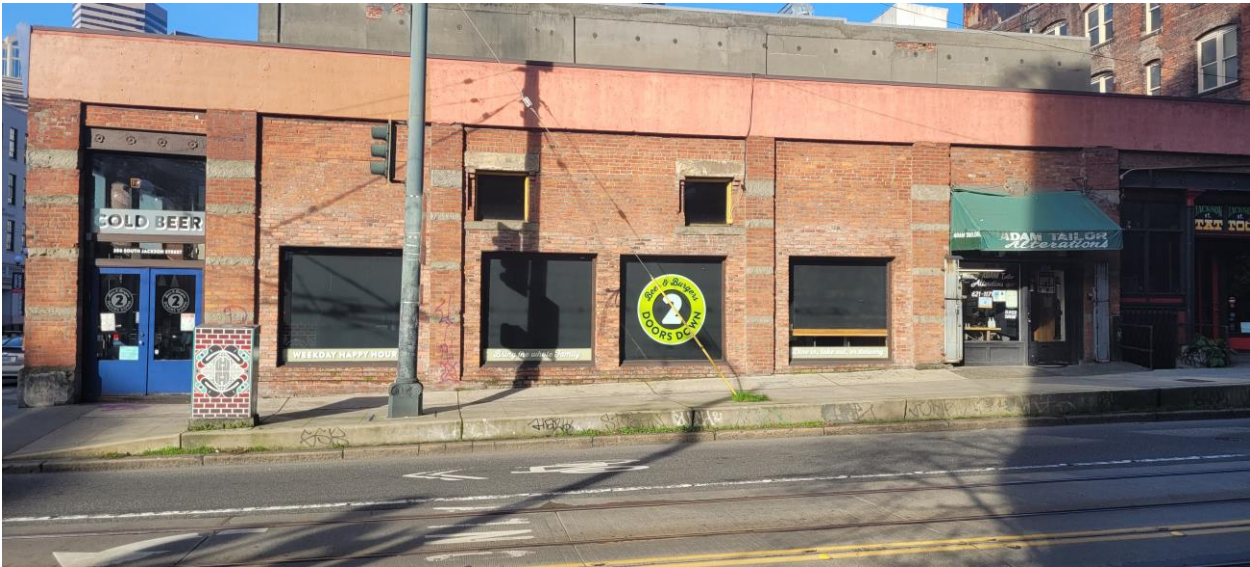
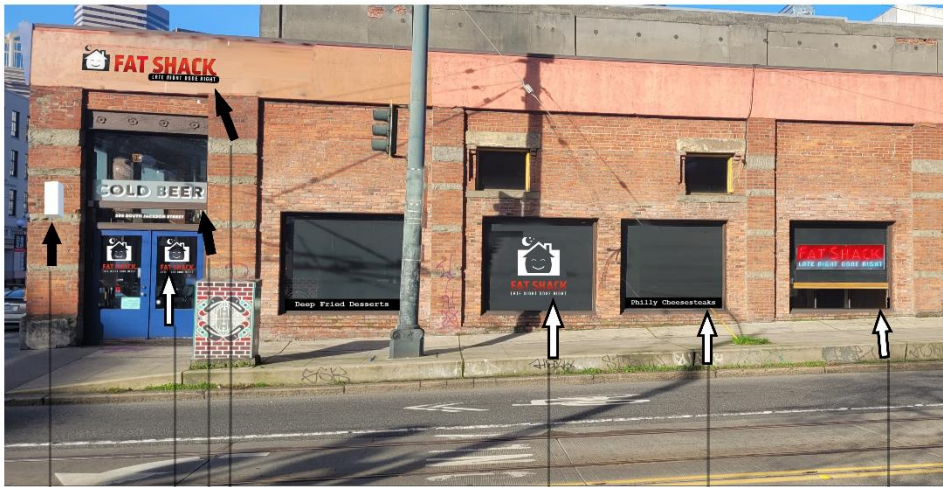


Existing conditions photos





Edited to show blade sign placement. Bottom of sign is 8 ft from the ground. Sign to be attached using existing hardware and electrical.

Edited to show revised and to scale sign size. Drawing of dimensions attached separately.

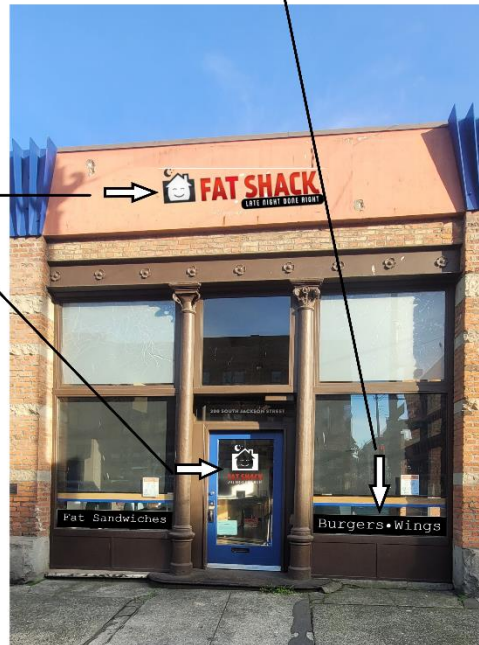
Sign to be left in place unless otherwise instructed by the preservation board.

Drawings of dimensions attached separately.

Edited to show scale of sign. Window coverage is 19% with all negative space to be transparent for optimal visibility through window. Drawing of dimensions attached separately.

Dimensions: Color bands 7' W x 10" H Letter height 6" *Applies to all letter bands

Letter band removed from window.

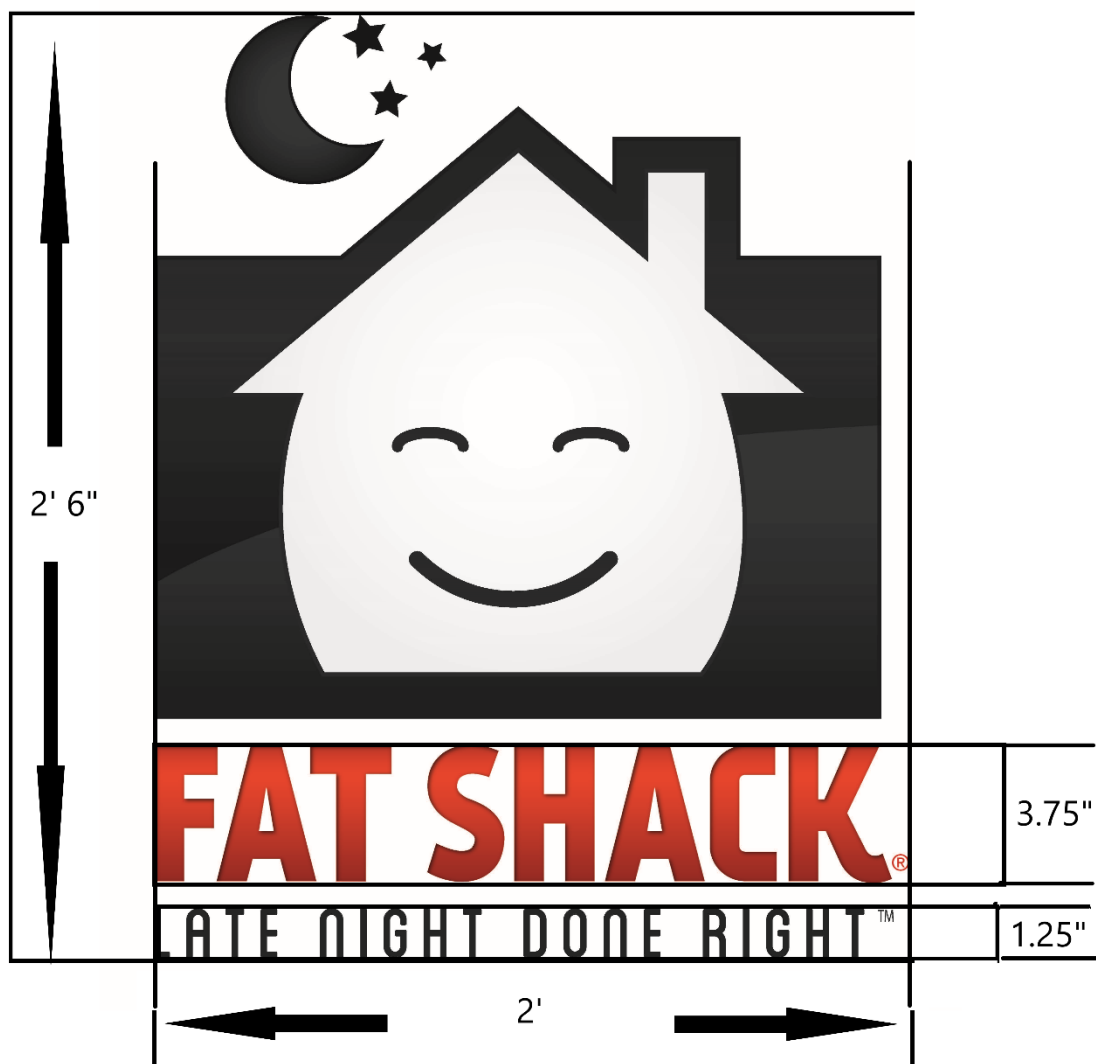


Metal logo sign

(located on exterior near rooftop)



Door Sticker



Window Sticker

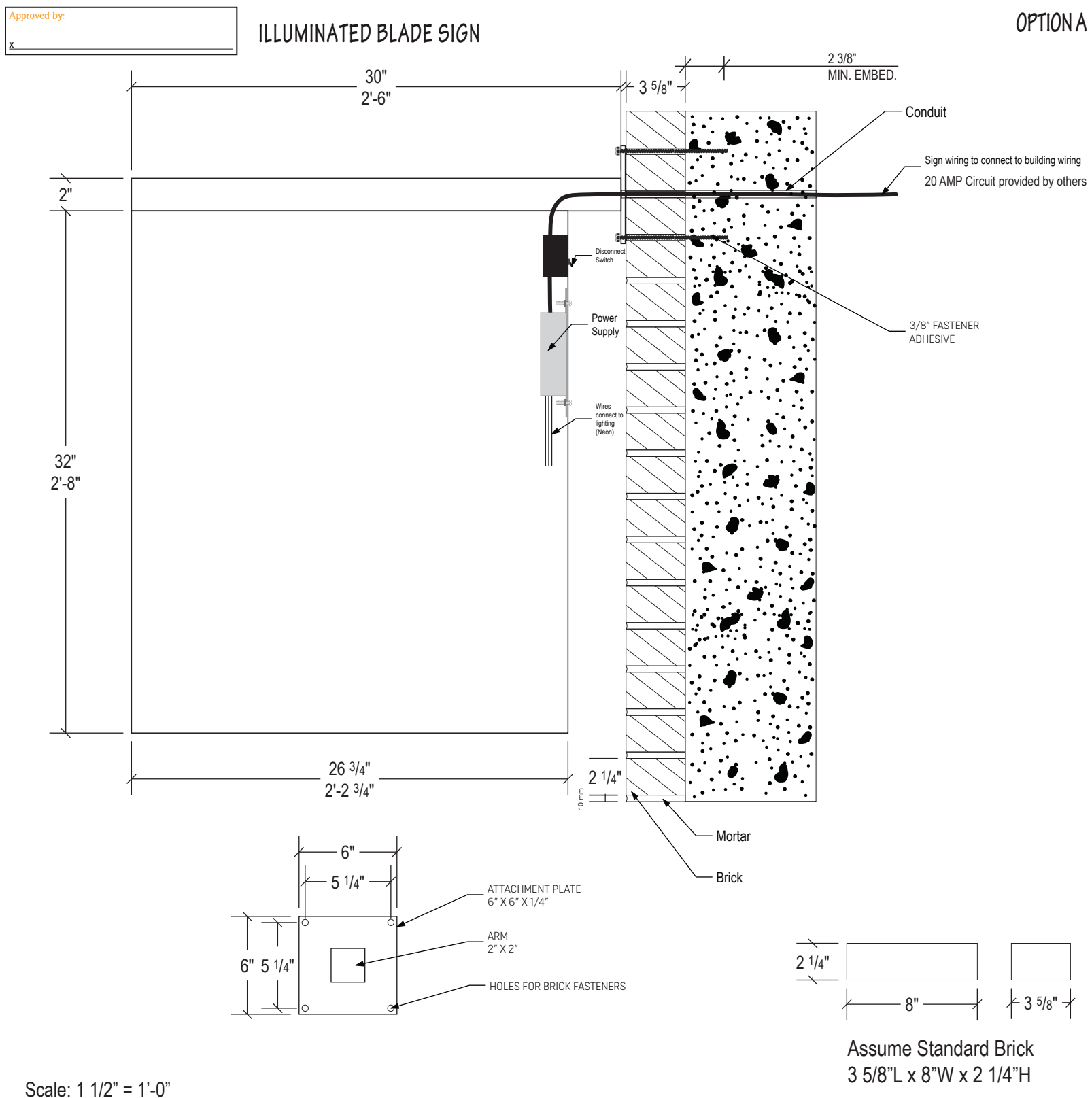




- Vinyl window stickers
- No backing for optimal visibility through windows
- Door stickers 1' x 1'
- Window sticker 4' x 4'



- 2 aluminium logo signs
- Attached using stainless steel bolts
- Non-illuminated
- One above West entrance, one above South entrance
- 108" w X 30" h



Brian Leibovitz
(720) 626-7794
1005 Alkire Street
Golden, CO 80401

Date: 10/21/19
Proof No. 3

Client: Fat Shack - Seattle

Site Address:

Contact:

Contact Ph.:

SIGNAGE	Type	-
	Qty	-
	Sides	-
	Int/Ext	-
MATERIALS	Channel/Return	n/a
	Face	n/a
	Retainer	n/a
	OTHER	n/a
GRAPHICS	Type	n/a
	Colors	n/a
LIGHTING	Type	n/a
	Color	n/a
MOUNTING	Type	n/a
	Size	n/a
	Color	n/a
ARTWORK	Provided By	n/a
	Condition	-
ELEVATIONS	Qty	n/a
	Removal	n/a
RELOCATE	From	n/a
	To	n/a
TOTAL SQ FT	n/a	

If you require specific colors for your sign please specify. If you require a color match please request a sample prior to printing. FRSC is not responsible for color errors due to non-specific color builds. (CMYK or PMS builds accepted)

Colors depicted are for representational purposes only

This artwork is the property of Colorado Sign Company and may not be reproduced, copied, or distributed without permission from Colorado Company.

Images shown may not reflect an accurate depiction of final signage scale and size.

Images shown are meant to indicate a rough account of placement and size and should not be used as instruction on how to build or where to place the finished sign.

ELECTRICAL NOTE

UL Compliant per NEC and manufacturing recommendations all electrical primary circuits must be dedicated isolated circuits.

ALL ELECTRICAL CONNECTIONS AND WIRING ARE THE RESPONSIBILITY OF THE CUSTOMER. ELECTRICAL RUNS OR FINAL ELECTRICAL HOOK UP CHARGES ARE NOT INCLUDED UNLESS OTHERWISE NOTED

UL LISTED

Scale: 1 1/2" = 1'-0"